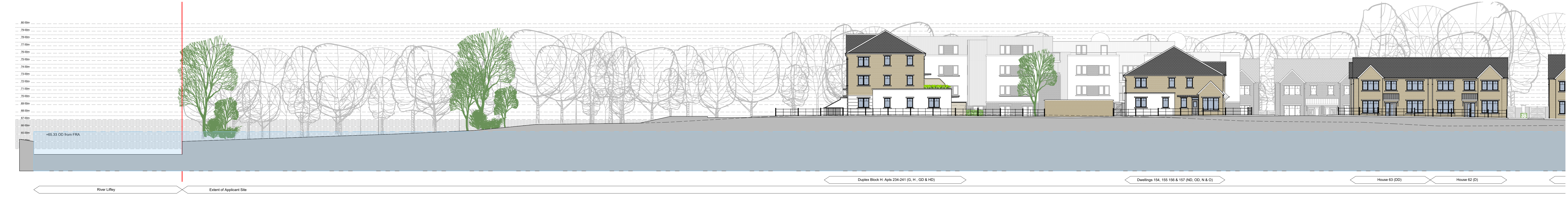




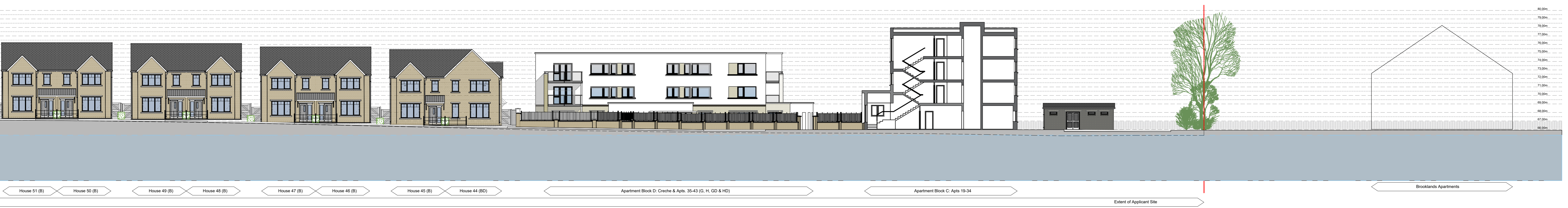
Contiguous Elevation C6 1:500



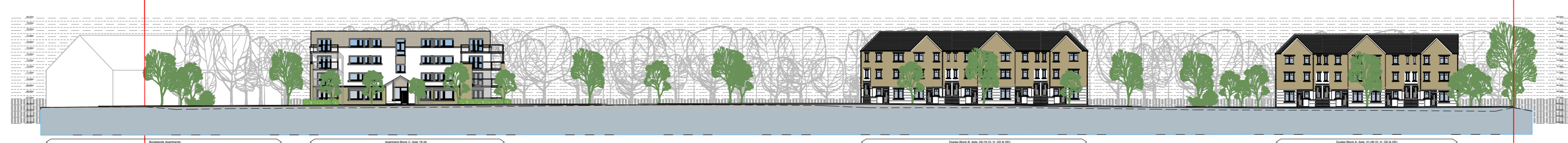
Contiguous Elevation C6 (Part A) 1:200



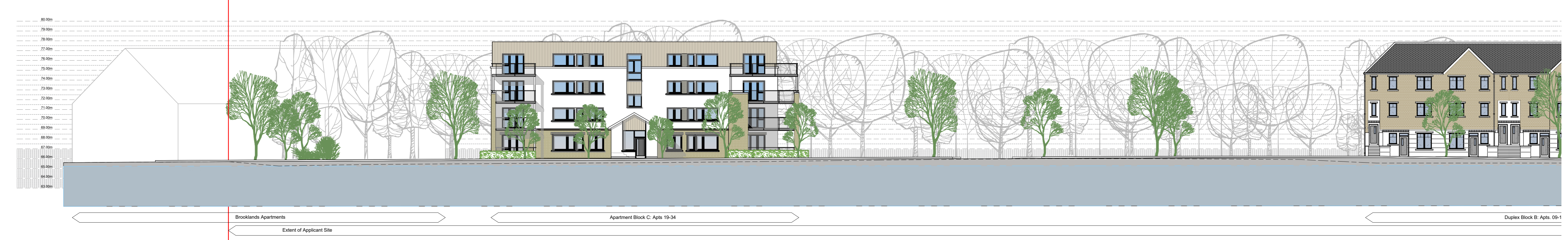
Contiguous Elevation C6 (Part B) 1:200



Contiguous Elevation C6 (Part C) 1:200



Contiguous Elevation C8 1:500



Contiguous Elevation C8 (Part A) 1:200



Contiguous Elevation C8 (Part B) 1:200



Key Plan

**REVISION NOTES**

The Developer/Contractor/Builder is to ensure that the building under construction complies with the 2010 Building Regulations in respect of all trades involved in the construction of this development.

The Developer/Contractor/Builder should notify BICA of any intended deviations from these plans prior to commencement of development.

All Site Development works to be carried out in accordance with the Recommendations for Site Development Works for Housing Areas' Dept. of Environment.

Contractors must verify all dimensions at the job before commencing any work. No working dimensions to be scaled. This drawing is for the purpose of planning only. Dimensions to blockwork only.

Date	Rev.
17-10-19 - A	Revised for updated proposal

**Client:** Westar Investments Ltd.

**Job:** Clane KDA1 SHD

**Location:** Lands at Cascoo & Abbeylands, Clane, Co. Kildare

**Drawing Title:** Contiguous Site Section/Elevation Sections C8 & C8

**DCO brian connolly associates CONSULTING ENGINEERS**

BB, Eng. MSc, D.C., C.Eng., MEEI

The Sols: "Wash" Hay, Care Cl. Kildare, L.043 802211 / 043 804027

e: bcassoc@eircom.net

**Planning - SHD 02c**

job no	18002
date	16.11.18
scale	1:500, 1:200
drawn by	David Casey
cad ref no	-
planning ref no	-
file ref no	-
drawing no	18002-333-A